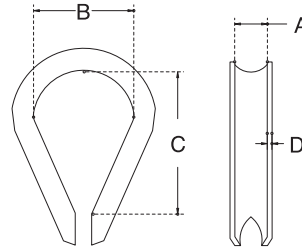


REGULAR DUTY THIMBLE

S.S. T316 STAMPED



ITEM	A	B	C	D	WT (lb)
234S-02	3/32"	5/16"	5/8"	0.03"	0.01
234S-03	1/8"	11/32"	3/4"	0.04"	0.01
234S-04	5/32"	1/2"	7/8"	0.04"	0.01
234S-05	3/16"	1/2"	7/8"	0.04"	0.02
234S-06	1/4"	11/16"	1-1/16"	0.05"	0.03
234S-08	5/16"	7/8"	1-3/8"	0.06"	0.04
234S-10	3/8"	1"	1-5/8"	0.06"	0.06
234S-13	1/2"	1-1/4"	1-7/8"	0.07"	0.09
234S-14	9/16"	1-3/8"	2-1/4"	0.07"	0.12
234S-16	5/8"	1-7/16"	2-3/8"	0.08"	0.18
234S-18	11/16"	1-1/2"	2-3/4"	0.08"	0.28
234S-20	3/4"	1-3/4"	3"	0.10"	0.31
234S-22	7/8"	1-5/8"	3-1/4"	0.10"	0.38
234S-25	1"	2"	3"	0.10"	0.46