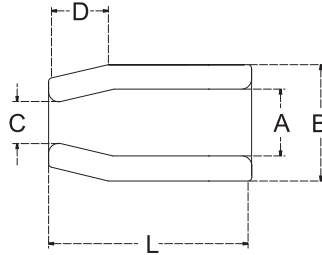


STAINLESS FLEMISH SLEEVE

**S.S. T316
MACHINED**



ITEM	Rope Size	A	B	C	D	L	After Swage WT/100 (lb)	
2621S-06	1/4"	0.47"	0.66"	0.31"	0.28"	1"	0.57"	5.00
2621S-08	5/16"	0.62"	0.91"	0.38"	0.44"	1-1/2"	0.75"	14.00
2621S-10	3/8"	0.66"	0.91"	0.47"	0.39"	1-1/2"	0.75"	15.00
2621S-13	1/2"	0.91"	1.22"	0.63"	0.56"	2"	1.01"	29.00
2621S-16	5/8"	1.09"	1.47"	0.75"	0.63"	2-3/4"	1.24"	56.00