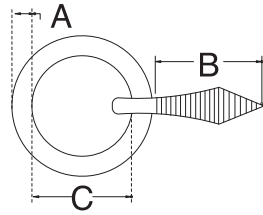


■ RING NAIL

**S.S. T304
FORMED AND WELDED**



ITEM	A	B	C	WT (lb)
318S-3	1/8"	1-3/8"	1"	0.05
318S-4	5/32"	1-3/8"	1-5/32"	0.06
318S-5	3/16"	1-1/2"	1-3/8"	0.09
318S-6	1/4"	1-9/16"	1-9/16"	0.13
318S-8	5/16"	1-9/16"	1-3/4"	0.22