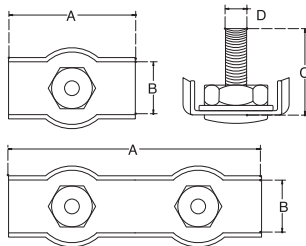


HEAVY DUTY WIRE ROPE CLIP

S.S. T304 STAMPED



ITEM	WIRE	A	B	C	D	WT (lb)
SINGLE						
511S-2	1/16"-3/32"	9/16"	1/4"	1/2"	5/32"	0.03
511S-3	1/8"	11/16"	5/16"	1/2"	5/32"	0.03
511S-4	5/32"	3/4"	7/16"	11/16"	3/16"	0.05
511S-5	3/16"	1"	1/2"	11/16"	3/16"	0.06
511S-6	1/4"	1-5/32"	11/16"	7/8"	1/4"	0.09
511S-8	5/16"	1-1/2"	7/8"	1-3/16"	5/16"	0.13
DUPLEX						
512S-2	1/16"-3/32"	1-5/32"	1/4"	1/2"	5/32"	0.03
512S-3	1/8"	1-5/16"	5/16"	1/2"	5/32"	0.05
512S-4	5/32"	1-5/8"	7/16"	11/16"	3/16"	0.06
512S-5	3/16"	2"	1/2"	11/16"	3/16"	0.09
512S-6	1/4"	2-3/8"	11/16"	7/8"	1/4"	0.14
512S-8	5/16"	3"	7/8"	1-3/16"	5/16"	0.25