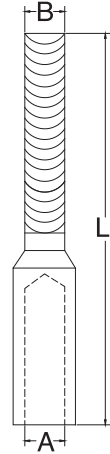


■ LIFELINE THREADED STUD

S.S. T316 MACHINED



ITEM	A (CABLE)	THREAD	LENGTH	AFTER SAGE	HOLE TO DRILL
78011S-0603	1/8"	1/4"-20 x 2-1/2"	4-1/4"	0.215"	0.25"
78011S-0605	3/16"	1/4"-20 x 2-1/2"	4-1/4"	0.310"	0.32"
* 78011S-0806	1/4"	5/16"-18 x 2-1/2"	4-3/4"	0.375"	0.38"
* 78011S-1006	1/4"	3/8"-16 x 3	5-1/4"	0.375"	0.38"

* USE 7/32" DIE TO SWAGE.