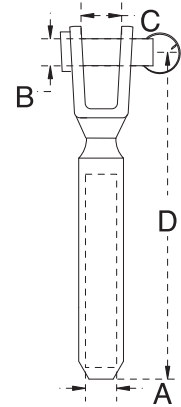


SWAGE JAW

S.S. T316
PRECISION CAST AND STAMPED



ITEM	A (WIRE)	B	C	D	AFTER SWAGE
7803S-02	3/32"	3/16"	1/4"	2-3/16"	0.190"
7803S-03	1/8"	3/16"	5/16"	2-5/8"	0.215"
7803S-04	5/32"	1/4"	3/8"	3-1/8"	0.245"
7803S-05	3/16"	5/16"	1/2"	3-1/2"	0.310"
7803S-06	7/32"	3/8"	9/16"	4-1/2"	0.375"
7803S-065	1/4"	7/16"	9/16"	4-1/8"	0.435"
7803S-07	9/32"	7/16"	9/16"	4-5/8"	0.495"
7803S-08	5/16"	9/16"	5/8"	5-3/4"	0.560"
7803S-10	3/8"	5/8"	11/16"	6"	0.620"
7803S-13	1/2"	3/4"	13/16"	6-7/8"	0.750"

MACHINE OR ROLLER SWAGE REQUIRED.
HAND SWAGE AVAILABLE FOR 1/8" & 3/16" CABLE SIZE.